

Specification

Nominal size

80mm

Tank connection

Flanged: 6 x 14mm holes on a 168.3mm PCD

Outlet/Process connection

Flanged: 4 x 18mm slots on a 146-160mm PCD

Properties

Left hand operated, handle with TIR

Materials

Contact parts: 316 stainless steel

Main seal: PTFE

Alternatives are available, refer to the Design Options page

Design Conditions

Weight:	12.5 Kg
Design Pressure (MAWP):	7.5 Bar
Test Pressure:	13.7 Bar
Design Temperature Min:	-40°C
Design Temperature Max:	200°C

NOTE: The Design Conditions and Section View dimensions are for the specified part number only.

Design Code

BS EN 14432

Range

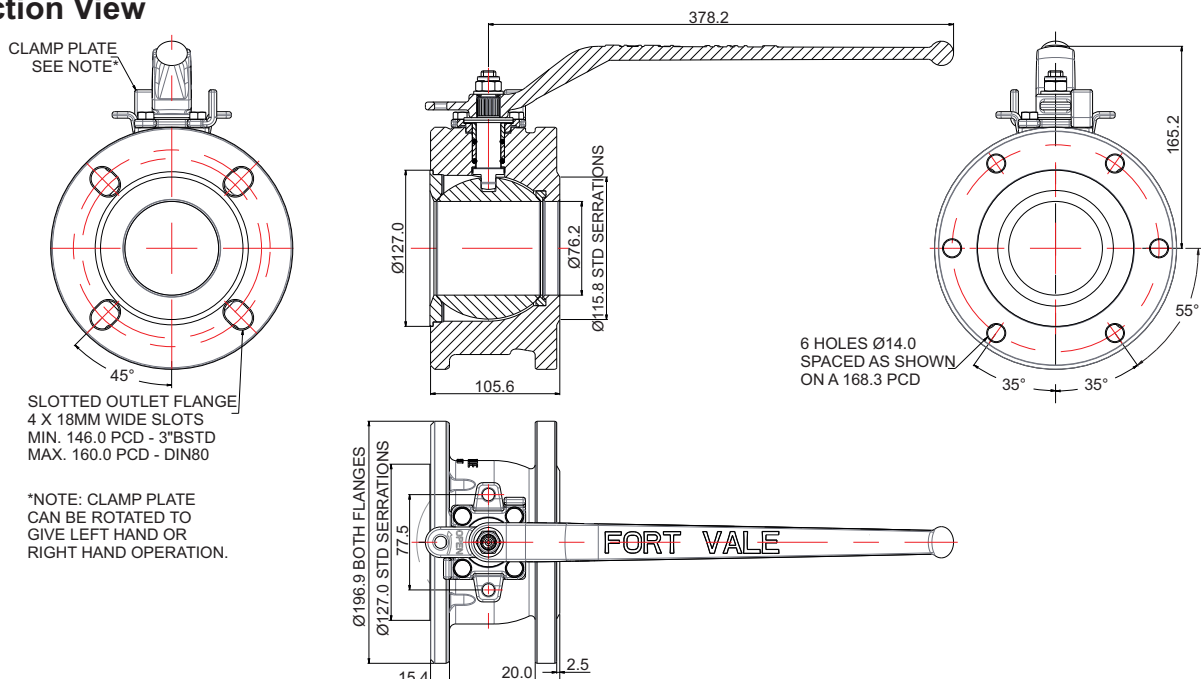
Description	Part No.
6 hole inlet, 4 hole outlet	360/5050X *
6 hole inlet, 4 hole outlet, steam heated	360/5050XSH *
4 hole inlet, 4 hole outlet	360/5030X *
4 holt inlet, 4 hole outlet, steam heated	360/5030XSH *

*The part number changes for left or right hand operated

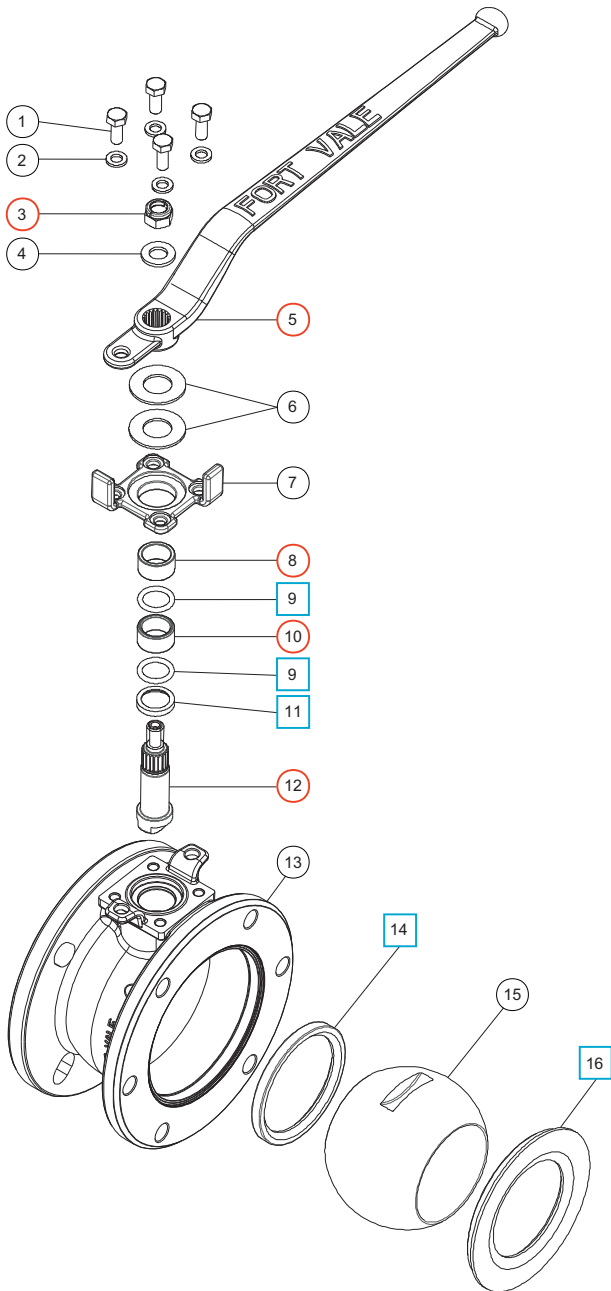
Related Parts

Description	Part No.
3" BSP outlet flange	368/0500
PTFE outlet gasket	5005-417
Blind flange	360/8095
Inlet mating flange	20378
CNAF/PTFE gasket for mating flange	5005-169
Inlet bolting kit	360/0300

Section View



Parts Drawing



Parts List

Item	Description	Part No.
1	M8 hex head bolt (4)	5111-822
2	M8 flat spring washer (4)	5113-003
3	M12 self-locking nut	5112-007
4	M12 washer	5123-003
5	Handle	360/3416
6	20mm Belleville washer (2)	5113-041
7	Clamp plate	360/5005
8	Top stuffing collar	360/3412
9	PTFE O ring (2)	5005-113
10	Bottom stuffing collar	360/3413
11	Bottom bearing	360/3421
12	Spindle	360/3422
13	Body	360/5015
14	PTFE rear seal	360/3402
15	Solid ball	360/3401
16	PTFE front seal	360/3405

Seal Kit

Description	Part No.
All parts marked <input type="checkbox"/> in the Parts List	360/50SK

Repair Kit

Description	Part No.
All parts marked <input type="radio"/> in the Parts List	360/50RK