

## Specification

### Nominal size/body angle

80mm / 45°

### Inlet connection

Flanged: 8 x 14mm holes equi-spaced on a 178mm PCD

### Outlet connection

3" BSP spigot flange with cap

### Properties

Highlift footvalve with integral butterfly valve

### Materials

Seating area: Superseat (alloy 625)

Contact parts: 316 stainless steel

Footvalve main seal: Fortyt

Butterfly valve main seal: PTFE

Cap seal: PTFE

Alternatives are available, refer to the Design Options page

## Design Conditions

Weight:	12.1 Kg
Design Pressure (MAWP):	4 Bar
Test Pressure:	6 Bar
Design Temperature Min:	-55°C
Design Temperature Max:	200°C

**NOTE:** The Design Conditions and Section View dimensions are for the specified part number only.

### Approvals

BS EN14432

BS EN14433

Design Approval by Lloyds Register of Shipping

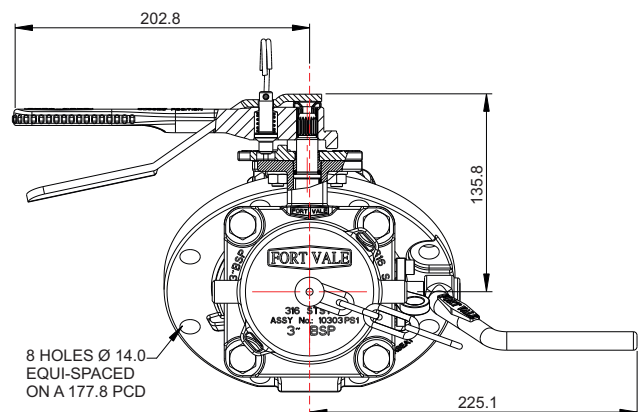
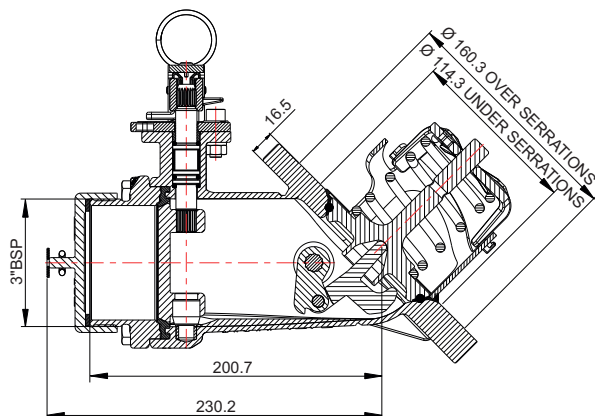
## Range

Description	Part No.
Standard specification	804/4000A
With alloy C276 seating area	804/4000AHS
Superseat; 3" camlock outlet & cap	804/4020A

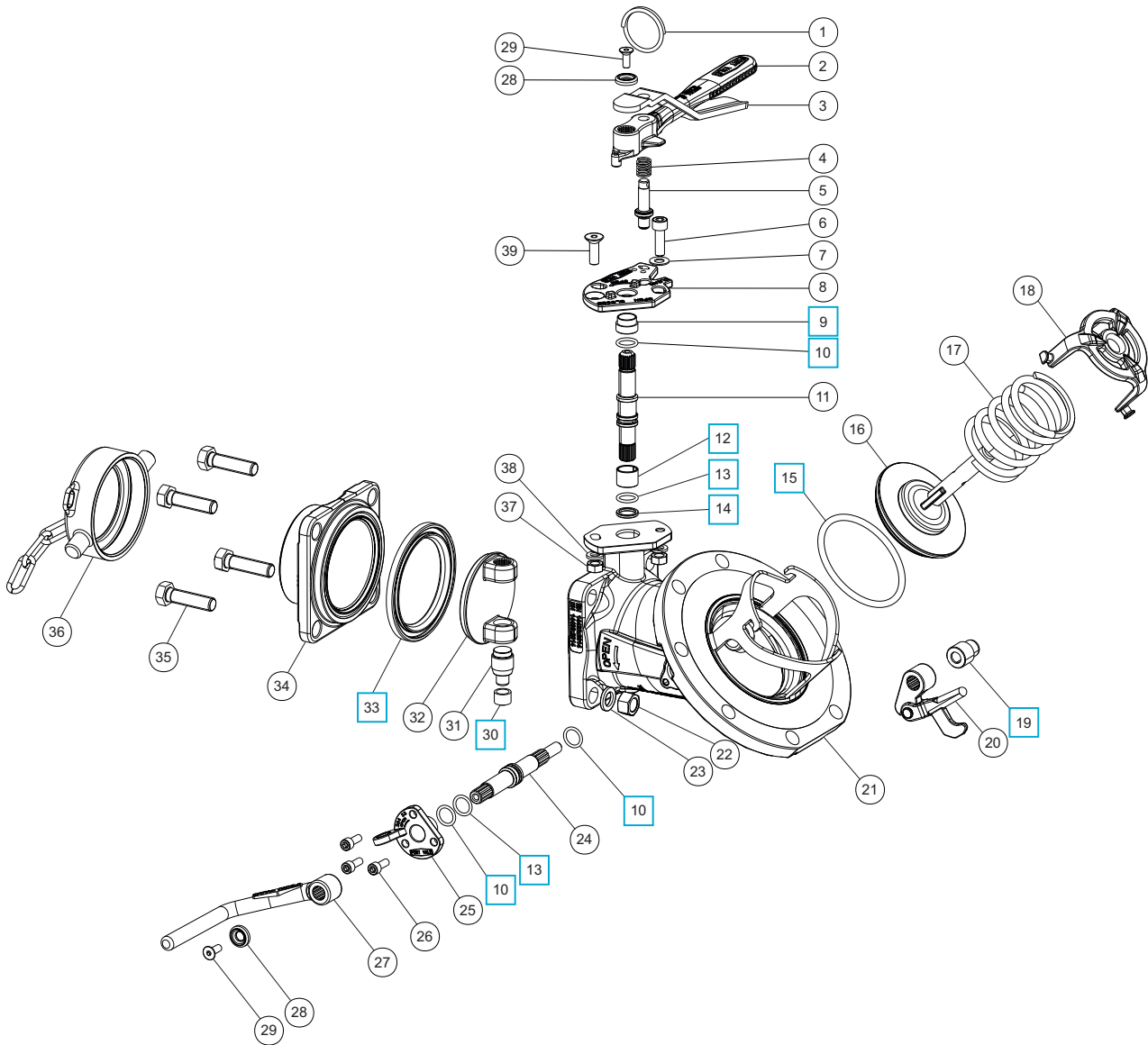
## Related Parts

Description	Part No.
Weld-in flange	324/9000
Stud kit	324/2070
CNAF/PTFE inlet gasket	5005-015
Valve operation decal	326/0302

## Section View



## Parts Drawing





# 3" 45° Univalve Bottom Discharge Assembly

Part No: 804/4000A

## Parts List

Item	Description	Part No.
1	Split ring	368/0011
2	Butterfly valve handle	368/0057
3	Handle lever	368/9837
4	Handle location spring	368/0012
5	Handle location pin	368/0010
6	M8 cap screw	5111-148
7	M8 plain washer	5113-005
8	Stuffing clamp	368/0047
9	Stuffing clamp bush	368/0301 <input type="checkbox"/>
10	PTFE O ring (3)	20363 <input type="checkbox"/>
11	Spindle	368/0201
12	Split bearing	252/0517 <input type="checkbox"/>
13	Viton O ring (2)	20361 <input type="checkbox"/>
14	PTFE spindle seat	368/0009 <input type="checkbox"/>
15	Fortyt O ring	5005-104 <input type="checkbox"/>
16	Poppet	324/2020
17	Closure spring	5104-971
18	Spring top plate	290/6104
19	PTFE crankshaft end bush	20362 <input type="checkbox"/>
20	Crank block & lifting finger	821/0300
21	Body assembly	826/1252B
22	M12 full nut (4)	5112-006
23	M12 spring washer (4)	5113-010
24	Spindle	821/0010
25	Stuffing clamp	324/1001
26	M6 cap screw (3)	5111-017
27	Footvalve handle	330/5010
28	Retaining washer (2)	20370
29	M6 bolt (2)	5111-030
30	PTFE bottom bush	368/0035 <input type="checkbox"/>
31	Bottom spindle	368/0036
32	Closure plate	368/0400
33	PTFE butterfly valve main seal	368/0002 <input type="checkbox"/>
34	Outlet flange	368/5129
35	M12 hex bolt (4)	5111-023
36	3" BSP cap with chain & seal	10303PS1
37	M8 full nut (2)	5112-001
38	M8 spring washer (2)	5113-003
39	M8 countersunk bolt	5111-085

## Seal Kit

Description	Part No.
All parts marked <input type="checkbox"/> in the Parts List	804/40SK